

UTILITY SERIES CASTORS

Plate Type

SUITABLE FOR LOADS UP TO **80KG** PER CASTOR

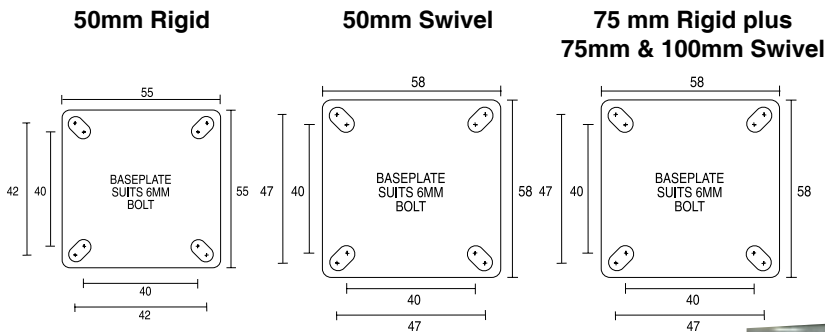
Diameter	Width	Wheel Type	Wheel Code	Bearing Type	Load Cap.	Height mm	Swivel Radius with Brake	Rigid	Swivel
50	18	RUBBER	NO CODE	PLAIN	40/30	73	50 74	R2703	S2704*
50	18	NYLON	NO CODE	PLAIN	50/40	73	50 74	R2705	S2706*
75	22	RUBBER	RN3441	PLAIN	60/50	97	67 83	R3703	S3704#
75	22	NYLON	NY3322	PLAIN	70/60	97	67 83	R3705	S3706#
100	25	RUBBER	RN4441	PLAIN	70/60	121	85 97	-	S4704#
100	25	NYLON	NY4415	PLAIN	80/70	121	85 97	-	S4706#

To order castors with Brake add **B** to end of Swivel Code. * Wheel Brake only. # Swivel Lock & Brake.
e.g. **S3704B** indicates brake castor.

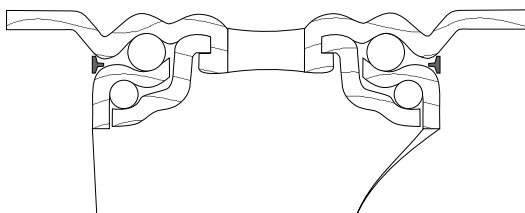
The Utility Series castor is designed for use on display equipment, wire baskets and light trolley applications. The castor features:

1. Great looking well designed castor.
2. Available with a choice of grey rubber wheel or nylon wheel.
3. Zinc plated finish giving an attractive corrosion resistant finish.
4. All the benefits of a pressed metal construction at a price anyone can afford.

BASEPLATE DIMENSIONS FOR PLATE TYPE UTILITY SERIES CASTOR



CROSS SECTION UTILITY SERIES PLATE CASTOR



Swivel Castor S4704



INDUSTRY



MEDICAL



FOOD

UTILITY SERIES CASTORS

Bolt Hole Type

SUITABLE FOR LOADS UP TO **80KG** PER CASTOR

Diameter	Width	Wheel Type	Wheel Code	Bearing Type	Load Cap. kg	Height mm	Swivel Radius with Brake	Bolt Size	Swivel	
50	18	RUBBER	NO CODE	PLAIN	40/30	70	50	74	10	S2700*
50	18	NYLON	NO CODE	PLAIN	50/40	70	50	74	10	S2701*
75	22	RUBBER	RN3441	PLAIN	60/50	97	67	83	10	S3700#
75	22	NYLON	NY3322	PLAIN	70/60	97	67	83	10	S3701#
100	25	RUBBER	RN4441	PLAIN	70/60	121	85	97	10	S4700#
100	25	NYLON	NY4415	PLAIN	80/70	121	85	97	10	S4701#

To order castors with Brake add **B** to end of Swivel Code. * Wheel Brake only. # Swivel Lock & Brake.
e.g. **S4700B** indicates brake castor.

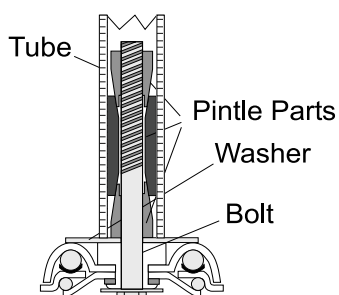
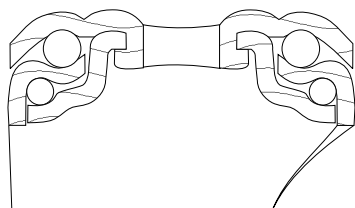
The Utility Series One Bolt castor has all the features of the plate type castor on the previous page plus the ability to have added various fittings:

- (a) expanding pintle to suit most common sizes of tube (see examples below).
- (b) a single bolt.

SEE PAGES 51 AND 52 FOR MORE DETAIL ON BOLT HOLE FITTINGS



CROSS SECTION UTILITY SERIES BOLT HOLE CASTOR



Cross Section Bolt Type Castor inserted in tube with expanding pintle part



Bolt Hole Castor S4700B



INDUSTRY



MEDICAL



FOOD

UTILITY SERIES CASTORS

Twin Wheel Plate Type

SUITABLE FOR LOADS UP TO **60KG** PER CASTOR

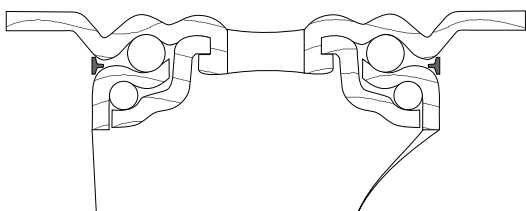
Diameter	Width	Wheel Type	Wheel Code	Bearing Type	Load Cap.	Height mm	Swivel Radius with Brake	Swivel
50	2 x 18	RUBBER	NO CODE	PLAIN	55	73	50 78	S2276
50	2 x 18	NYLON	NO CODE	PLAIN	60	73	50 78	S2274

To order castor with Brake add **B** to end of Swivel Code. e.g. **S2274B** indicates brake castor.

The castor features:

1. Twin Wheels enabling the castors to be manoeuvred more easily under load.
2. Low profile suitable for use under furniture e.g. TV, VCR, DVD Trolley.

CROSS SECTION UTILITY TWIN WHEEL
PLATE SERIES CASTOR



BASEPLATE DIMENSIONS

UTILITY TWIN WHEEL

PLATE SERIES

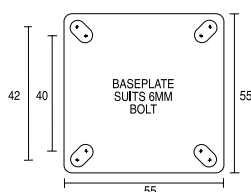


Plate Castor S2274B

Twin Wheel Bolt Hole Type

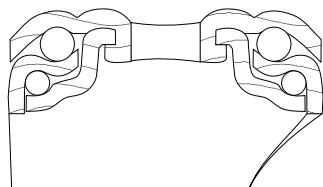
SUITABLE FOR LOADS UP TO **60KG** PER CASTOR

Diameter	Width	Wheel Type	Wheel Code	Bearing Type	Load Cap.	Height mm	Swivel Radius with Brake	Bolt Size	Swivel
50	2 x 18	RUBBER	NO CODE	PLAIN	55	70	50 78	10	S2280
50	2 x 18	NYLON	NO CODE	PLAIN	60	70	50 78	10	S2278

To order castor with Brake add **B** to end of Swivel Code. e.g. **S2280B** indicates brake castor.

SEE PAGES 51 AND 52 FOR MORE DETAIL
ON BOLT HOLE FITTINGS

CROSS SECTION UTILITY TWIN WHEEL
BOLT HOLE SERIES CASTOR



Bolt Hole Castor S2278B



INDUSTRY



MEDICAL



FOOD